

Layered House

Alterations & Additions

Private Residence

Paddington, Sydney

2022

Floor Space 110m²

Site Area 134m²



Sensitive rear extension with steel doors framing the interior and exterior spaces



Joinery additions between the existing heritage layers of the home



Sophisticated bedroom addition filled with natural light from the inserted skylights



A small cottage with an Inner City Heritage Conservation overlay is transformed through the demolition of an unsympathetic rear addition.

Replaced by a new two storey rear wing with a dramatic double height void over the Dining Room and Kitchen with hidden skylights.

A Master Bedroom and Ensuite are located discreetly within the new roof space.

The spaces are layered to bring light and connection to the rooms, celebrating the daily life of the family as they live in the home and garden.

Layered House



Ground Floor Plan
1:200 @A4



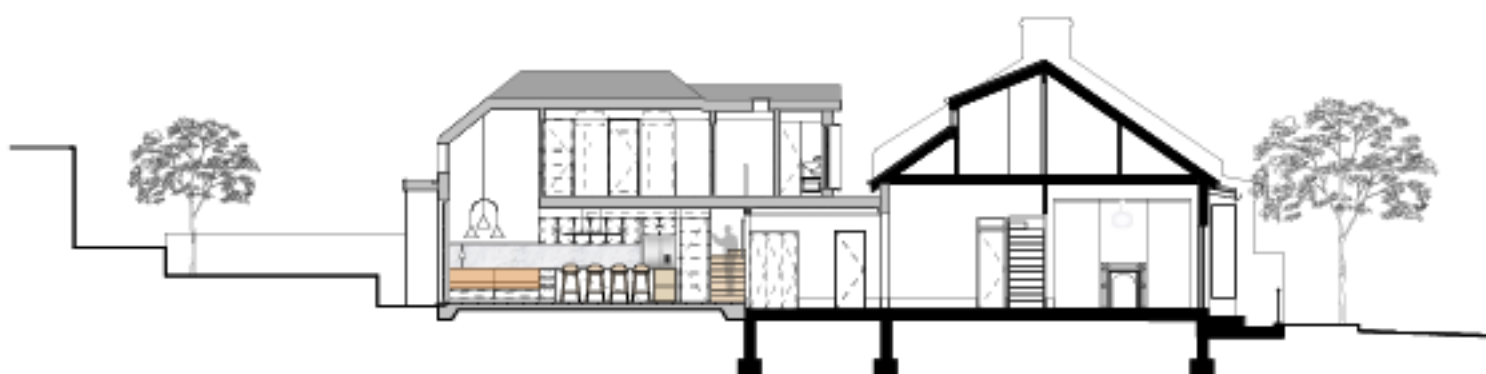
First Plan
1:200 @A4



East Elevation
1:200 @A4



West Elevation
1:200 @A4



Long Section
1:200 @A4