

## Deck House

*Alterations & Additions*

*Private Residence*

*Paddington, Sydney*

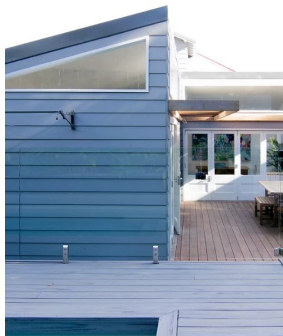
*2020*

*Floor Space 134m<sup>2</sup>*

*Site Area 354.7m<sup>2</sup>*



*Flushed joinery to create a seamless space between floor and wall finishes.*



*A seamless outdoor verandah space and considered pool area*



*Simple, minimal but functional finishes to the bathroom*

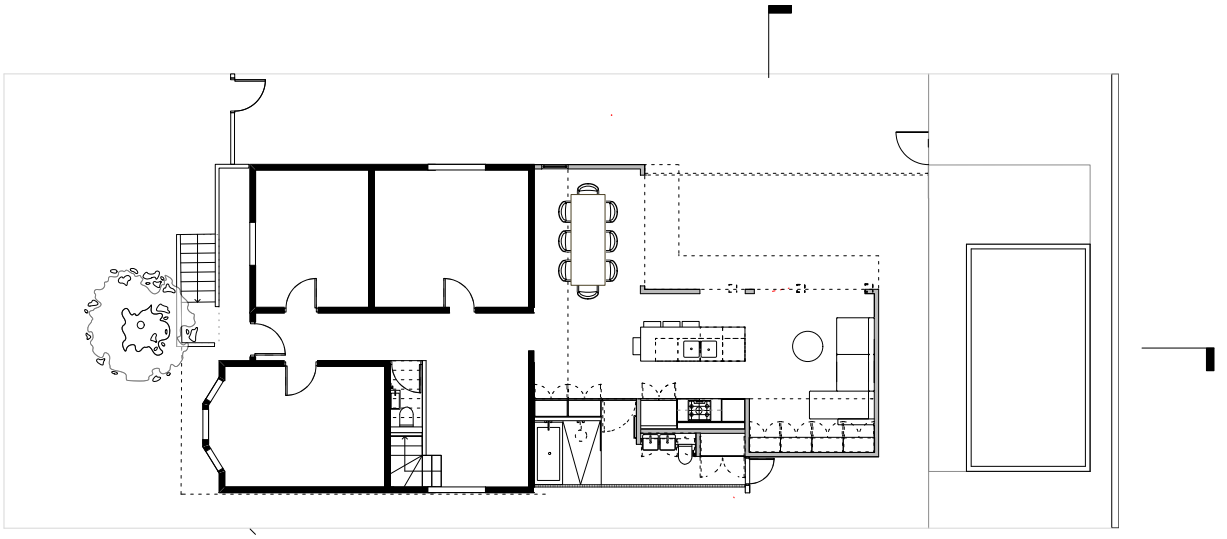


The new rear addition orients the living spaces toward the North, around a timber deck. The home is light and airy with a seamless transition from old to new and dramatic sweeping roof to capture light and views of the sky while maintaining privacy and overlooking from the surrounding buildings.

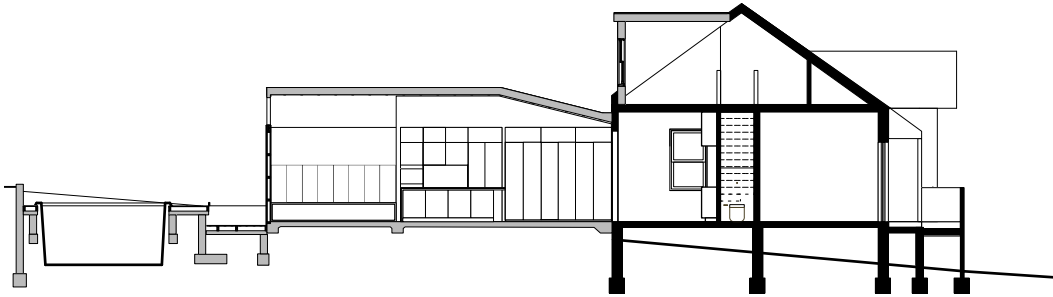
The material palette is intentionally contemporary to reinforce the indoor-outdoor connection as the doors open up to the courtyard, transforming the living spaces into outdoor rooms.

Materials and fixtures are reclaimed including the Bifold doors and Kitchen to further enhance the environmental and economic sustainability of the project.

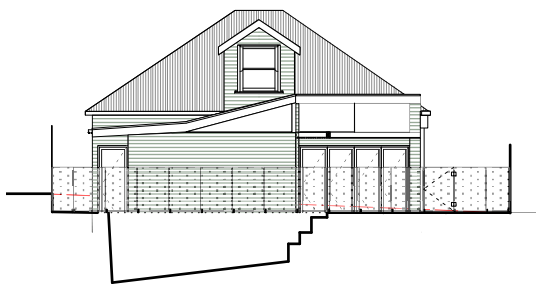
Deck House



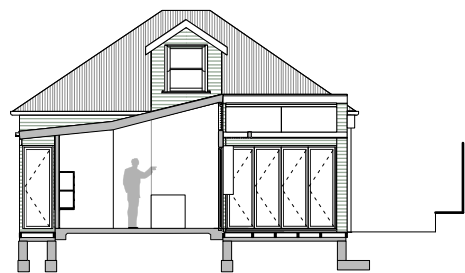
Ground Floor Plan  
1:200 @ A4



Long Section  
1:200 @ A4



Rear Elevation  
1:200 @ A4



Short Section  
1:200 @ A4