

Pivot House

Alterations & Additions

Private Residence

Paddington, Sydney

2021

Floor Space 50m²

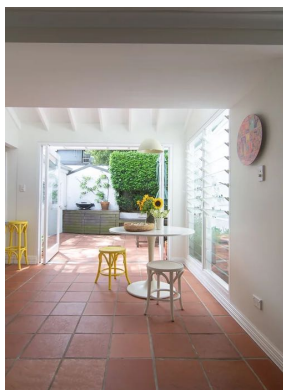
Site Area 80m²



Light filled space with natural ventilation from the added louvers



Cottage expression expanded from the interior of the home to the new addition with a timber pergola



Seamless terracotta tiles flow from the interior space to the rear outdoor garden space



A charming cottage is opened up for space, light and connection to the rear courtyard.

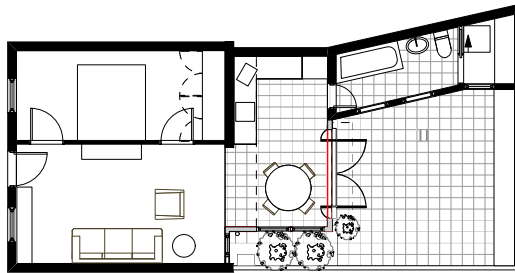
New Dining Room with raked ceiling and large timber pivot doors present a modern contrast to the heritage cottage. The new rear addition created an additional dining room that links the courtyard to the front living space. Energy efficiency is improved greatly by bringing more North Light into the home to heat the thermal mass of the slab, finished in tiles that were re-used from site and new ones matched to the existing.

Louvre windows allow for passive ventilation while retaining security for the owner, living in a dense inner city location.

A timber pergola will shade the new space in Summer, with the intention of growing deciduous vines over it, to all the winter sun in.

Pivot House

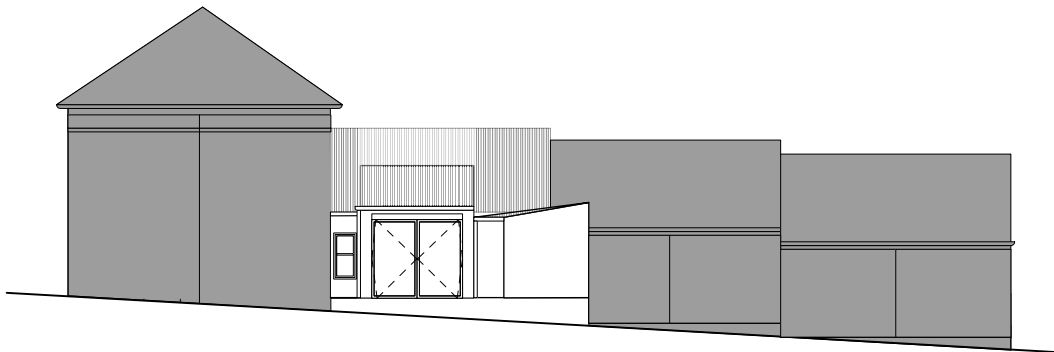
Ground Floor Plan
1:200 @ A4



South Elevation
1:200 @ A4



North Elevation
1:200 @ A4



Long Section
1:200 @ A4

