

Screen House

Alterations & Addition

Private Residence

Randwick, Sydney

2020-22

Floor Space 219m²

Site Area 362m²



All existing retained - roof removed from pergola, to frame all views of the rear extension and bring in more light



The master bedroom is given privacy through a sliding timber screen with a Juliet balcony



The bathrooms are simple and elegant with feature timber vanities



On Gadigal Land of the Eora Nation

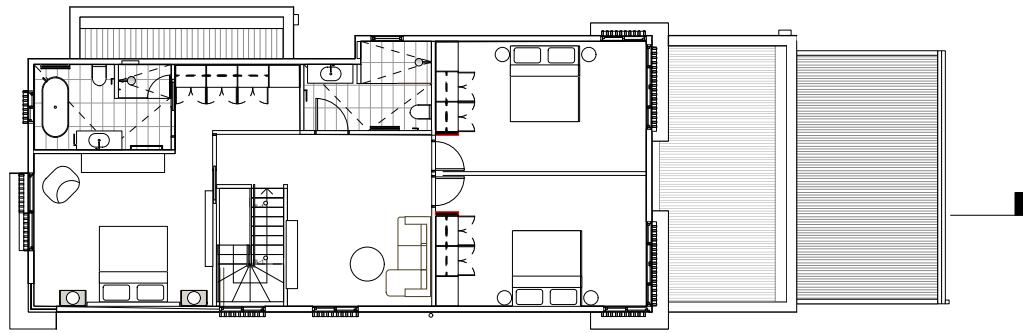
Located on a wide tree lined street close to Queens Park and Bronte Beach the Screen House is a modest yet sensitive second storey addition onto an existing project home in Randwick, Sydney.

In response to our clients brief to reduce the size of the inherited approved house design a considered approach of retention and reduction formed the fundamental concept of our design.

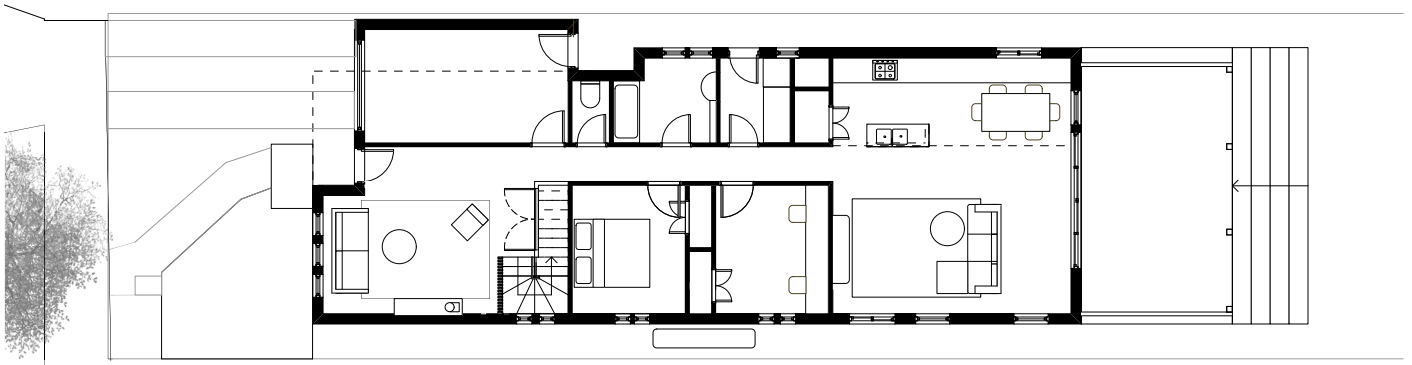
The character of the facade sits comfortably in the Streetscape, with a sliding screen to a Juliet Balcony creating a movement and pattern while still ensuring privacy to the Bedroom beyond.

The retention of the Ground Floor and use of a second storey light weight structure and cladding ensured that the design was providing an optimum environmental and economically sustainable solution.

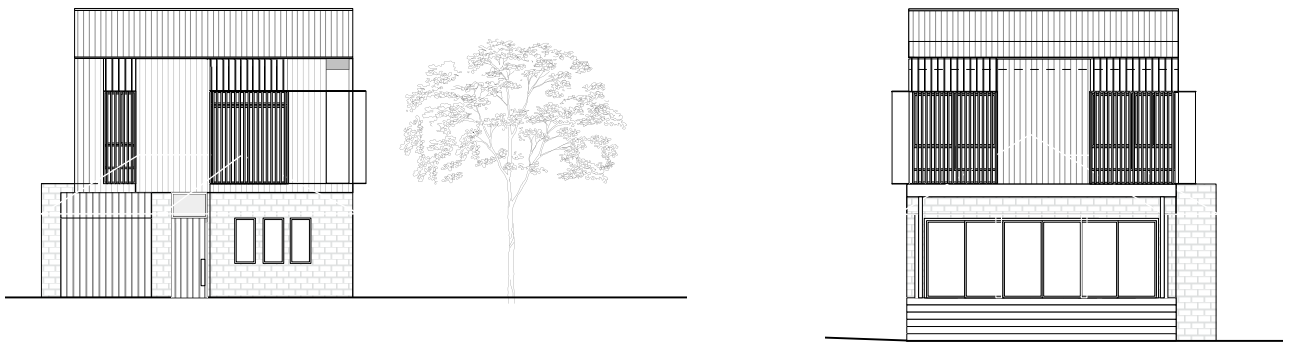
The addition of the second storey brought light to the Ground Floor and the opportunity to create a greater sense of space, connection and generosity.



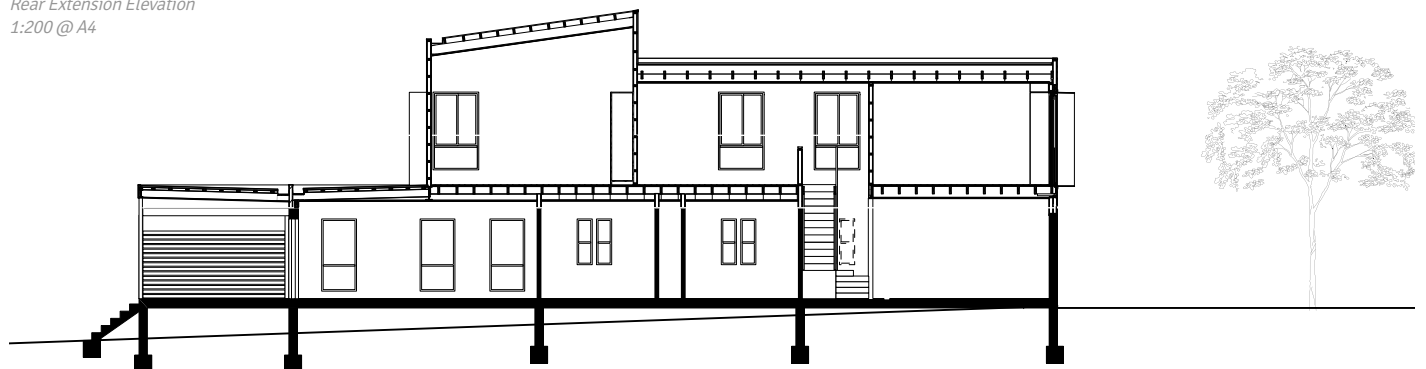
First Floor Plan
1:200 @ A4



Ground Floor Plan
1:200 @ A4



Rear Extension Elevation
1:200 @ A4



Long Section
1:200 @ A4